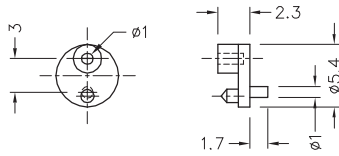


ACCESSORIES FOR GEAR BOX

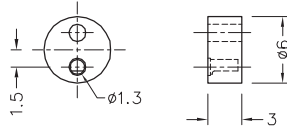


CAM FOR W211 & W223 SERIES

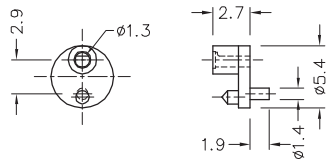
CAM NO.1



CAM NO.2

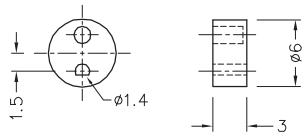


CAM NO.4



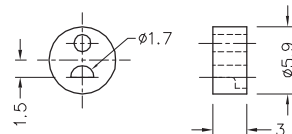
CAM FOR W215 SERIES

CAM NO.3



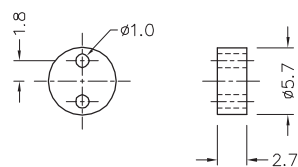
CAM FOR W218 SERIES

CAM NO.11



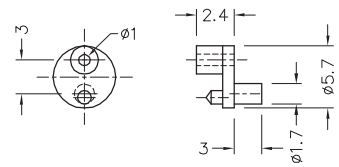
CAM FOR DIFFERENT SHAFT DIAMETER ($\phi 1.0$, $\phi 1.2$, $\phi 1.5$ MM)

CAM NO.6

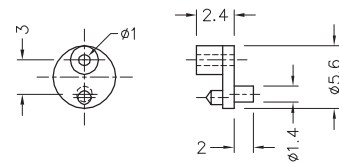


CAM FOR DIFFERENT SHAFT DIAMETER ($\phi 1.0$, $\phi 1.2$, $\phi 1.5$ MM)

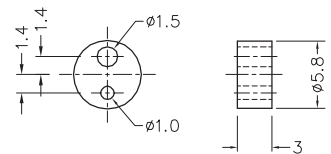
CAM NO.7



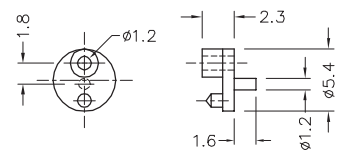
CAM NO.8



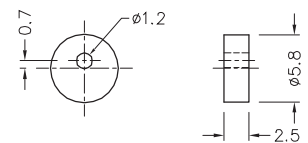
CAM NO.10



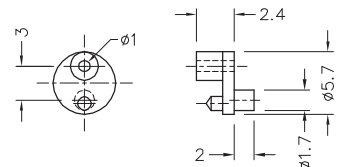
CAM NO.16



CAM NO.17



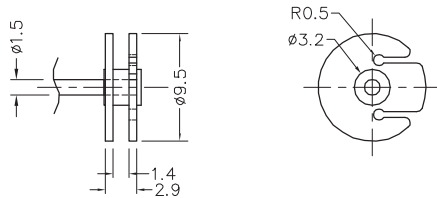
CAM NO.21



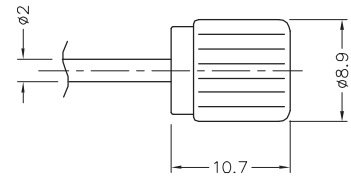


PULLEY FOR DIFFERENT SHAFT DIAMETER (Ø1.5, Ø2.0MM)

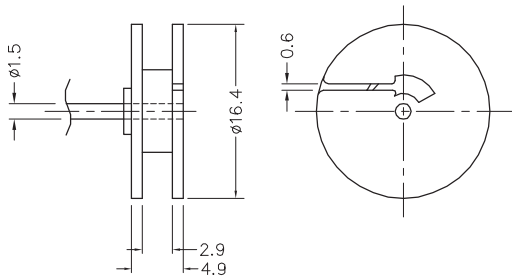
PULLEY NO.1



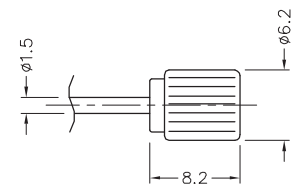
KNOB FOR W217 SERIES



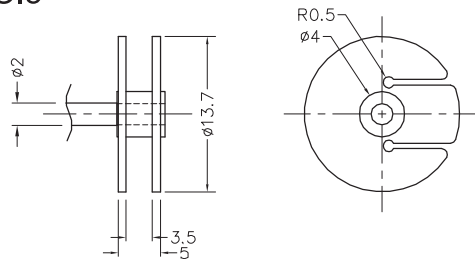
PULLEY NO.2



KNOB FOR W218 SERIES

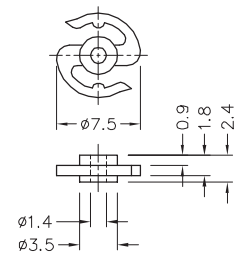


PULLEY NO.5

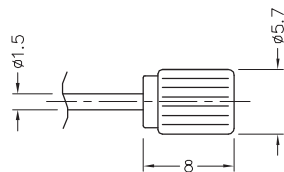


S-CLUTCH FOR DIFFERENT SHAFT DIAMETER (Ø1.2, Ø1.5, Ø2.0MM)

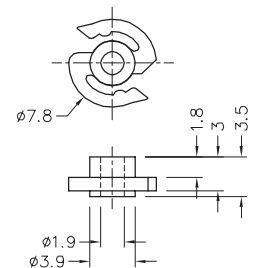
S-CLUTCH HF



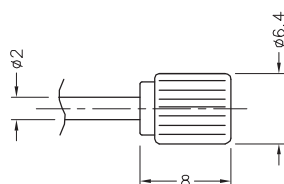
KNOB FOR W211 SERIES KNOB FOR W213 SERIES



S-CLUTCH NO.17



KNOB FOR W215 SERIES



S-CLUTCH NO.18

